

QUALITY AIR FOR LIFE

Panasonic

BONUS WLAN SMART ADAPTOR WITH A PANASONIC PREMIUM INVERTER

Cooling / Heating Ducted Air Conditioner*

*PE Range



Panasonic
Comfort Cloud



CZ-CAPWFC1



Claim a BONUS Panasonic CZ-CAPWFC1 CAC WLAN Smart Adaptor when you purchase a selected Panasonic Premium Inverter Ducted Air Conditioner between 01/09/19 and 31/10/19.

Offer available to SA and NT.

Bonus applicable at time of purchase, between 01/09/19 and 31/10/19.



Industrial AIR

aircon.panasonic.com.au

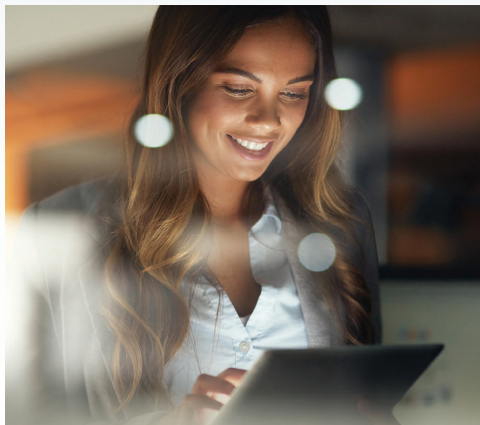


Panasonic
Air Conditioning



Complete Control of Your Comfort

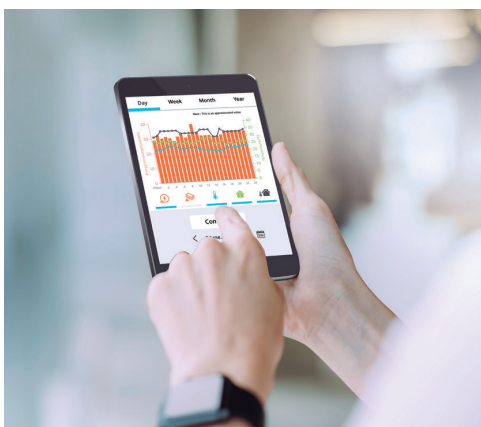
The Panasonic WLAN Smart Adaptor, and Comfort Cloud App put you in complete control of your air; revolutionising the use, monitoring and management of your air conditioners, and their energy consumption.



SMART Control

Control, monitor and analyse up to 200 units in multiple locations from just one device.

*Each indoor unit might require individual WLAN Adaptor



SMART Efficiency

Analyse and compare energy consumption, improving energy efficiency and cost effectiveness.



SMART Comfort

Control your comfort 24 hours a day with remote AC access features and much more.



SMART Assist

Monitor and manage air conditioner troubleshooting effortlessly whilst assigning user control permissions.



ECONAVI Energy Saving Mode*

*Available on: All models, excluding 18.0 - 22.4kW units. CZ-CENSCT1 & CZ-RTCSB required.



On/Off All Air Conditioners At Once



Group Connection of up to 8 Indoor Units



Temperature Adjustment



Energy Usage Analysis



Error Codes Notification and Identification



User Control Permissions



Energy Usage Comparison
(Day/Week/Month/Year)



Weekly Timer Setting

Panasonic Comfort Cloud App



The Panasonic Comfort Cloud App allows you to control and monitor your Panasonic Air Conditioning units from anywhere, anytime, using your portable device.

*CZ-CAPWFC1 required, functionality varies by model.

Applicable Models

Capacity	6.0kW	7.1kW	10.0kW	10.0kW*	12.5kW	12.5kW*	14.0kW	14.0kW*	16.0kW	16.0kW*	18.0kW*	20.0kW*	22.4kW*
Indoor	S-60PE1R5B	S-71PE1R5B	S-100PE1R5B	S-100PE1R5B	S-125PE1R5B	S-125PE1R5B	S-140PE1R5B	S-140PE1R5B	S-160PE1R5B	S-160PE1R5B	S-180PE1R5B	S-200PE1R5B	S-224PE1R5B
Outdoor	U-60PZ2R5	U-71PZ2R5	U-100PZ2R5	U-100PZ2R8*	U-125PZ2R5	U-125PZ2R8*	U-140PZ2R5	U-140PZ2R8*	U-160PZ2R5	U-160PZ2R8*	U-180PZH2R8*	U-200PZH2R8*	U-224PZH2R8*
		U-71PZH2R5	U-100PZH2R5	U-100PZH2R8*	U-125PZH2R5	U-125PZH2R8*	U-140PZH2R5	U-140PZH2R8*	U-160PZH2R5	U-160PZH2R8*			

*Indicates 3 Phase Units

WLAN Smart Adaptor Specifications

CZ-CAPWFC1

Input Voltage	DC 12.0V (Supplied from T10 indoor unit)
Power Consumption	Maximum 2.4W
Size (H x W x D)	120 x 70 x 25mm
Weight	190g (including communications lines)
Interface	Wireless LAN
Wireless LAN Standard	IEEE 802.11 b/g/n
Frequency range	2.4GHz band
Encryption	WPA2-PSK(TKIP/AES)
Operation range	0-55°C, 20 - 80RH%

*1 CZ-CAPWFC1 WLAN Adaptor & CZ-RTCA or CZ-RTCSB required per unit.
Requires an Internet connection and the App downloaded from the App Store or GooglePlay Store on your smartphone or tablet with the latest Operating System available.

*2 Functionality varies depending on model.

Connection Diagram



1. Android 4.4 or above
2. IOS 9.0 or above



• The content of this flyer is effective as of September 2019 • Due to printing considerations, the actual colours may vary slightly from those shown
• All graphics are provided merely for the purpose of illustrating a point. 19DUCT0801PROMO.

